

# XRS-MD Multi-Directional Series

Front and Rotational Side beam in one unit



## Making the unseen seen

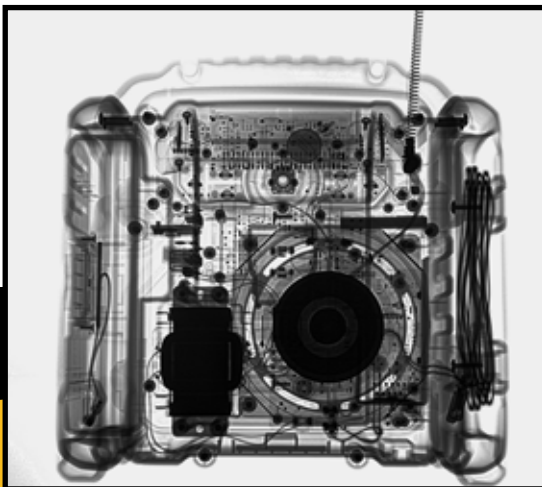
### Versatile and Adaptable

#### Blue Front beam cap

Compatible with existing accessories  
Minimized image edge fade

#### Gold Side beam cap

Rotates 360°  
Operate in tight space



# All-New Graphic Display



- Larger text and graphics
- Viewable in direct sunlight
- Colored text and backlight
- Extended temperature range
- Help button – access on-board context-sensitive help
- QR Code - access additional information online

## Integrated Arca Swiss tripod mount



## Field-Interchangeable Caps



- Adapt to the situation
- Direct X-ray beam **forward** or any angle out the **side**

Lemo connector above battery for easier access

		XRS3MD	XRS4MD
Dimensions	(with battery)	L: 15.42" (39.17 cm)	L: 19.26" (48.92 cm)
	(with Picatinny Rails)	W: 4.26" (10.82 cm)	W: 4.80" (12.19 cm)
	(without key)	H: 5.83" (14.81 cm)	H: 7.05" (17.91 cm)
Weight	(with battery)	11.80 lbs. (5.40 kg)	18.30 lbs (8.30 kg)
Average Output Dose*	Forward	3 mR per pulse	5 mR per pulse
	Side	0.6 mR per pulse	2 mR per pulse
Pulse Rate		15 pulses per second	9 pulses per second
Pulses per Battery charge		5500	3000
Operating Temperature		-4 to 158 °F (-20 to 70 °C)	-4 to 158 °F (-20 to 70 °C)
IP Rating		IP 54	IP 54

\* Dose measured at 12" (30 cm) from source

\* screen images simulated

Contact [sales@goldenengineering.com](mailto:sales@goldenengineering.com) for more information or to get a quote



**Celebrating 50 Years**  
of supplying quality products,  
providing extraordinary service,  
improving portable X-ray technology,  
and being family-owned and operated.